

December 12th, 2008

eight

Clive Bright

Majella Clancy

Dearbhail Connon

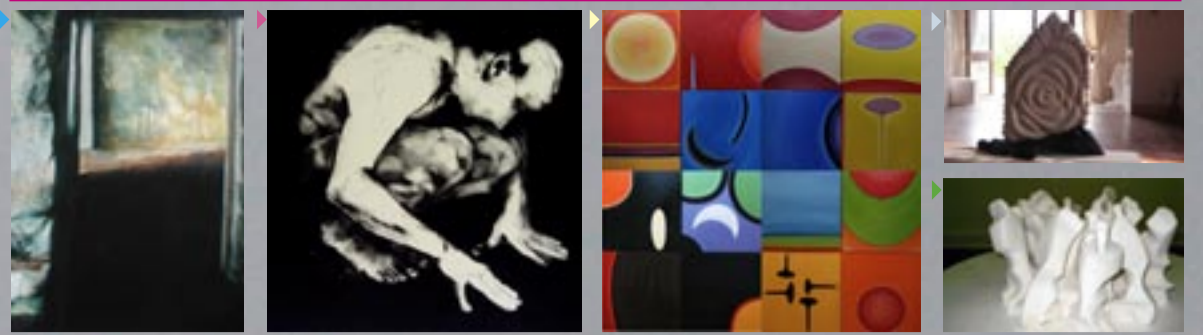
Billy Moore

Ricardo Marques

Elaine Reynolds

Heidi Wickham

Kate Wilson



From our first year of operation in 2005, The Dock has presented an open exhibition - *Open Season* - every December by artists from this region. These exhibitions were major events featuring hundreds of works. At this point, we want to create an opportunity to highlight work by some of these artists whose practice warrants more focused attention. *EIGHT* showcases the work of Clive Bright, Majella Clancy, Dearbhail Connon, Billy Moore, Ricardo Marques, Elaine Reynolds, Heidi Wickham and Kate Wilson. While the eight artists all have associations with the region, they were selected by virtue of the diversity of approaches and media they employ, encompassing sculpture, painting, drawing and installation. What they all share is a commitment to quality within their work and a professionalism toward the on-going development of their practice.

eight

Clive Bright

Majella Clancy

Dearbhail Connon

Billy Moore

Ricardo Marques

Elaine Reynolds

Heidi Wickham

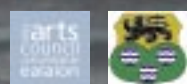
Kate Wilson

The Dock invites you to the preview of eight

Friday December 12th at 5.30pm.

All are welcome.

Admission is free to all the exhibitions in the galleries
Open Monday to Saturday 10am - 6pm / Sunday 2pm - 6pm
+353 071 965 0828
info@thedock.ie www.thedock.ie

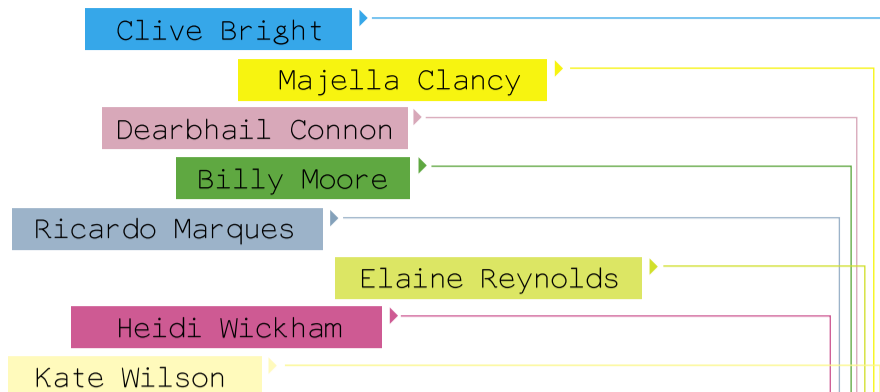


December 12th to February 7th, 2008
Opening reception Friday December 12th at 5.30pm

The Dock, St. George's Terrace, Carrick-on-Shannon, Co. Leitrim



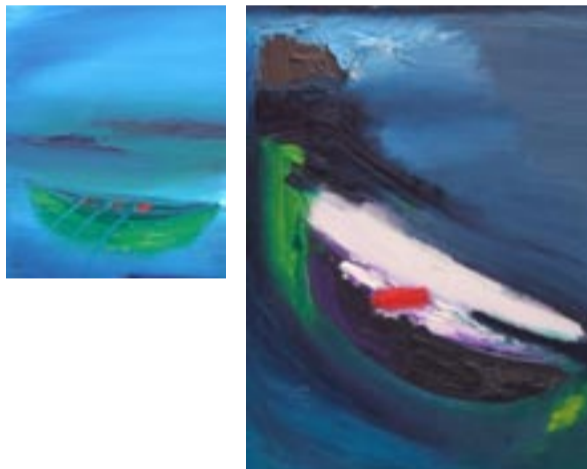
eight



Dearbhail Connon

A native Dubliner, Dearbhail is now based in Kinsale, Co Cork. She attended the degree program on Sherkin Island and has exhibited extensively in the West Cork region in venues such as The West Cork Art Centre and The Warren Gallery. She had her first solo show in 2006 at the Inchydonney Lodge and Spa. She has also worked with performance artist Amanda Coogan. Her work is permanently on show at the Hayden Shaughnessy Gallery in Kinsale. It is also part of the private collections of both Cork University Hospital and Temple Street Hospital, Dublin.

For the past three years Dearbhail has been employed as part of the Arts for Health Programme, working in Skibbereen, Schull and Bantry hospitals. She also holds a BA (hons) in media production, is an independent film maker and currently doing an MA in art therapy at Crawford College Cork.



Billy Moore

Billy Moore was born in England and has been living in Ireland for the last 15 years. His work - in sculpture and painting - is held in many public and private collections. Recent exhibitions include a solo show at Sólás Gallery, Ballinamore, County Leitrim (2008), group exhibition at the Higher Bridges Gallery in Enniskillen (2008), *Invited Artist*, Boyle Arts Festival (2008). Billy Moore participated in Roscommon County Council's Art at Work program and is a member of the Boyle Arts Group. He is represented by the Tramyard Gallery, Dalkey, County Dublin. Billy Moore lives in County Sligo.



Heidi Wickham

Originally from South Wales, Heidi Wickham trained first at West Surrey College of Art and Design, followed by an Honours Degree in Fine Art from Bristol Art College, now the University of the West of England. Heidi has been involved in drawing since leaving Bristol in 1989, but it has only been in the last six years that she has exhibited, having previously taught art to community groups and private individuals. Heidi is currently represented by five galleries in Ireland - as well as private collections in Norway, London, New York and a gallery in Paris.



Clive Bright

Clive Bright is an artist who lives on his family farm in south county Sligo. Since graduating from NCAD in Dublin in 2003, Bright has had numerous solo exhibitions of his paintings at the Cat & the Moon Gallery, Sligo, 2007; The Tramyard Gallery, Dalkey, 2007; The Linenhall, Castlebar, 2006. Group exhibitions include the RHA Annual Exhibition and the Boyle Arts Festival, 2007. Clive Bright was the recipient of the 2005 Golden Fleece Award and his work is held by many public and private collections.



Majella Clancy

Born in Co Leitrim, Majella Clancy studied at GMIT, Galway and LIT, Limerick before completing an MFA at The University of Ulster, Belfast in 2006. Recent exhibitions include a solo show at Queen Street Studios Gallery in June 2008. Group exhibitions include *Ephemeral Boundaries* Talbot Gallery, Dublin; *Eigse 2008* Carlow, Curator Patrick T Murphy Director RHA; *Selected Artists* Curator Robbie O Halloran, Mary Street Gallery, Waterford. Forthcoming events include a solo exhibition at Ballina Arts Centre in 2009 and a residency at The Leitrim Sculpture Centre in 2009. Her work is included in many collections including OPW, Dublin, The Arts Council of Northern Ireland and The University of Ulster Permanent Collection.



Ricardo Marques

Ricardo Marques, originally from Portugal, has been living in Ireland since 2003. He has participated in exhibitions at The Leitrim Sculpture Centre, 2003 & 2008; *Iontas*, Sligo, 2003; and Derg View Gallery, Mountshannon, 2006. He works in stone, wood and more recently, mixed media installation. Ricardo Marques now lives in County Clare.



Elaine Reynolds

Elaine Reynolds studied in the National College of Art and Design, Dublin and the University of Ljubljana, Slovenia. Reynolds' work is strongly research and process-driven; investigations include the use of live action and video. Recent activities demonstrate an interest in social and economic theory, exploring industrial processes and the idea of labour as a commodity.

Since graduating in 2007 she has participated in events such as 'Excursions' performance festival, Limerick; 'Never Ending Telescope' The Back Loft, Dublin; 'Transitopia' a site-specific project, Naas, Co. Kildare. Reynolds was one of six local artists involved in the 'New Sites-New Fields' research project based at the Leitrim Sculpture Centre, Manorhamilton.



Kate Wilson

A graduate of the Slade School of Art London, Kate Wilson has been working as a painter in Ireland for 13 years. She is a recipient of Award of Distinction from the RHA Gallagher Gallery. Her work can be found in civic collections and private collections throughout Ireland and the UK. In 2006, Kate exhibited *Portrait* at Lemon Street Gallery, Dublin. Kate's recent painting continues to explore the relationship between sound, colour and form. Kate is currently co-artist in residence at St Edwards School, Sligo as part of the Kids Own Publishing Partnership 'Nature of Sligo' project. Other current collaborative work includes a multi-camera video piece shot at Warwick University with sound artist Cathal Roche for Encounters funded by the Arts Council under its Projects, New Work Award.

